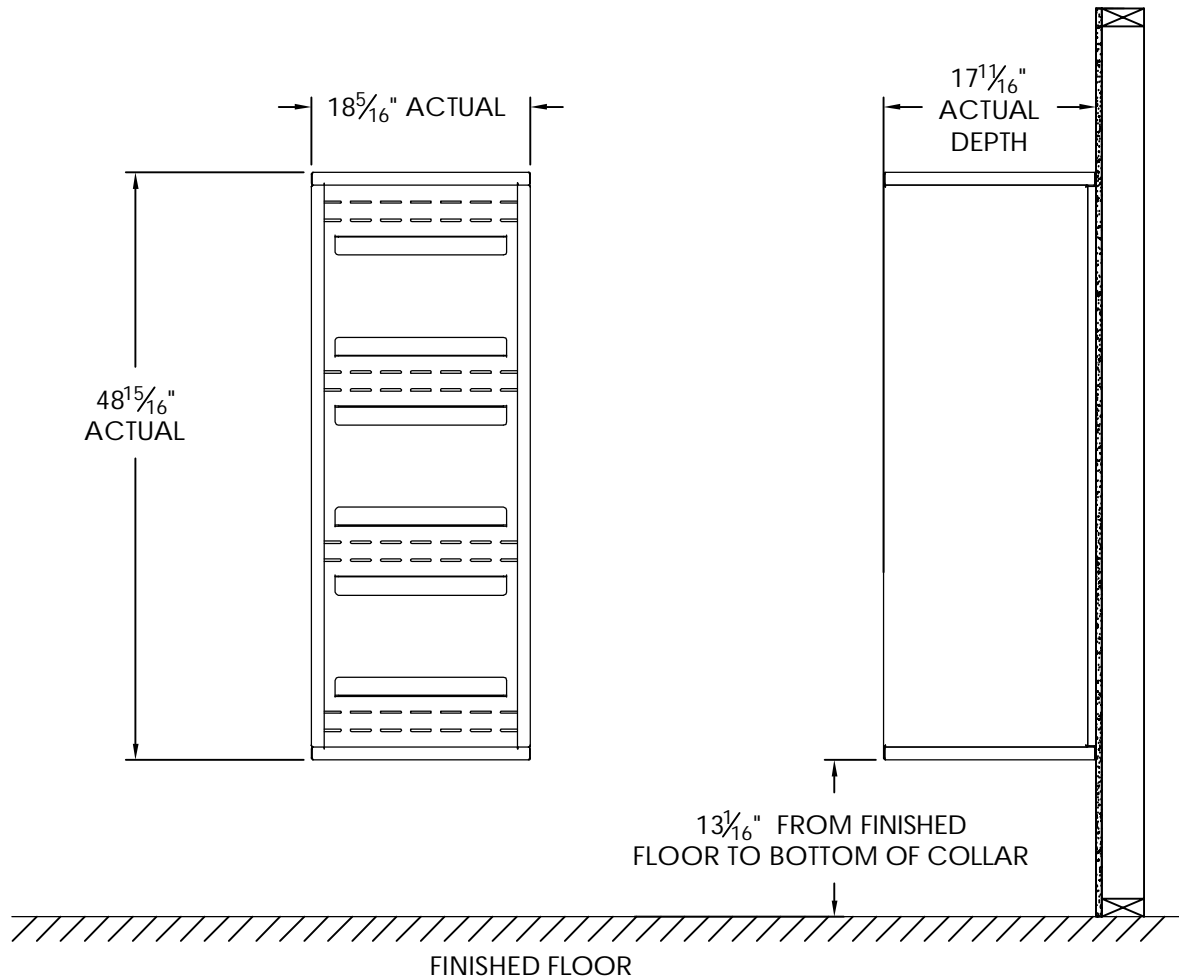


versatile™ 4C Surface Mount Collar, SM13S



Notes:

1. Designed to mount Florence Versatile™ 4C mailbox single column 13-High Suite modules (sold separately).
2. For use with front loading modules only.

PRODUCT SERIES: VERSATILE™ 4C SURFACE MOUNT COLLAR

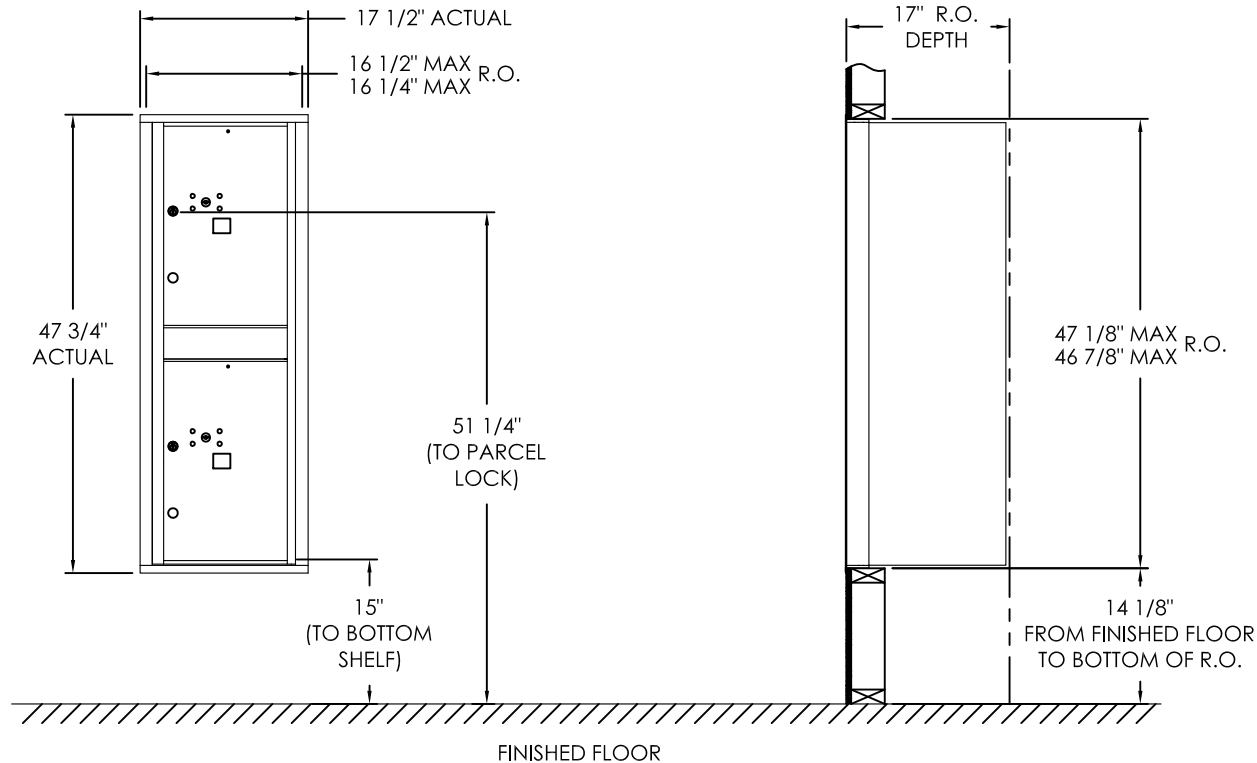
AF FLORENCE
manufacturing company

5935 Corporate Drive • Manhattan, KS 66503
www.florencemailboxes.com • (800) 275-1747

A GIBRALTAR INDUSTRIES COMPANY

MODEL	SM13S	REV	B
SCALE	NONE	LAST REV DATE	7/02/2014
DRAWING NUMBER	SM13SCS	DRAWN BY	TNS

versatile™ 4C Mailbox, 4C13S-2P



COMPARTMENT CHART

DESCRIPTION	COMPARTMENT	COMPARTMENT SIZE	QTY.
PARCEL	PL6	20-1/2" H x 12" W x 15" D	2

Notes:

- This module meets the USPS STD-4C requirements for installation defined below when the mailbox is installed per the dimensions provided on this drawing.
 - At least one customer compartment shall be positioned less than 48" above finished floor (AFF).
 - No parcel locker (interior bottom shelf) shall be positioned less than 15" AFF.
 - No patron (tenant) lock shall be positioned more than 67" AFF.
 - No customer compartment (interior bottom shelf) shall be positioned less than 28" AFF.
 - The USPS Arrow lock shall be positioned 36"- 48" AFF.
- This 4C mailbox can also be used for private applications.
- The rough opening width for multi-unit 4C installations is provided using the Florence configurator: www.florencemailboxes.com/configurator.

PRODUCT SERIES: VERSATILE™ 4C FRONT LOAD MAILBOX

FLORENCE
CORPORATION

5935 Corporate Drive • Manhattan, KS 66503
800.275.1747 • www.florencemailboxes.com

MODEL 4C13S-2P	REV B
SCALE NONE	LAST REV DATE 07/09/19
DRAWING NUMBER 4C13S-2PCS	DRAWN BY RAK